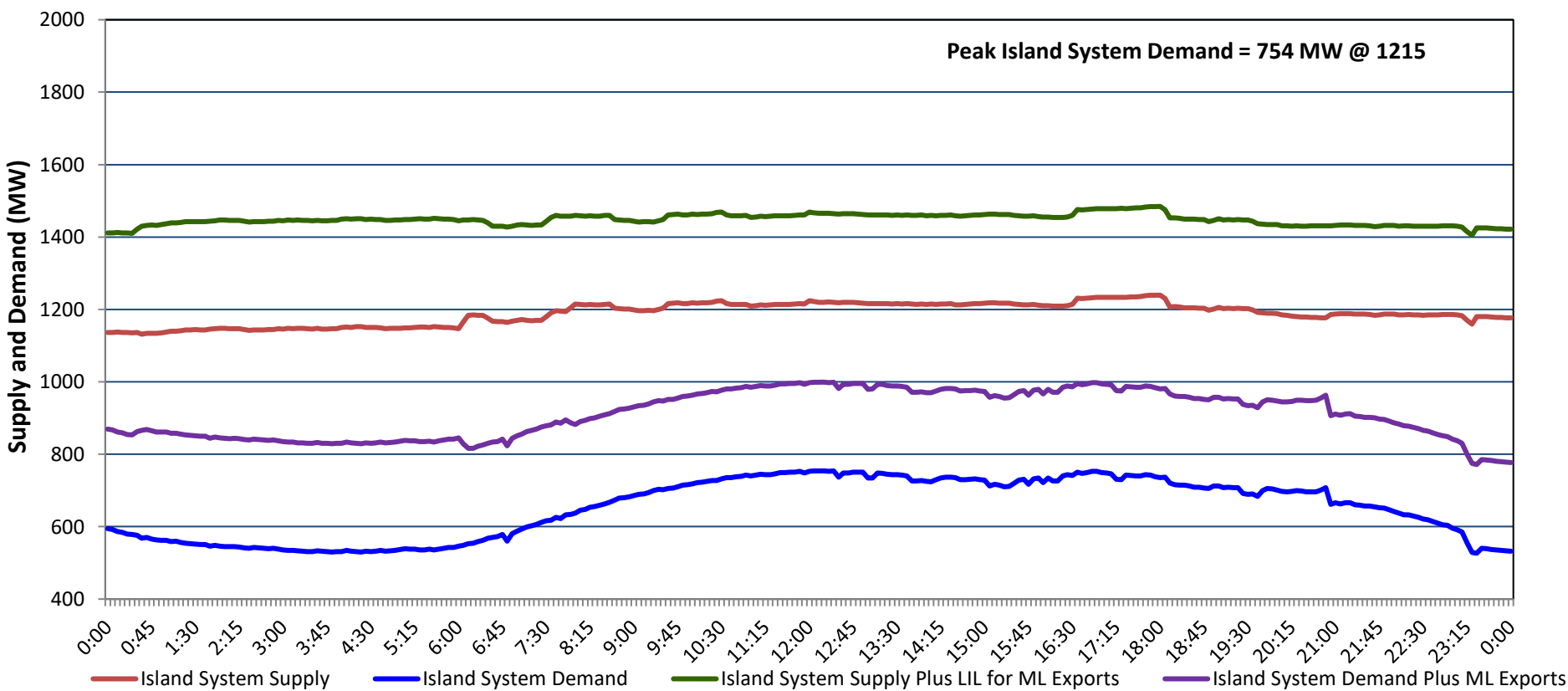


Newfoundland Labrador Hydro (NLH)
Supply and Demand Status Report Filed Thursday, July 31, 2025

Section 1
Island Interconnected System - Supply, Demand & Exports
Actual 24 Hour System Performance For Wednesday, July 30, 2025



Island Supply Notes For July 30, 2025

- A As of 0800 hours, March 30, 2025, Holyrood Unit 3 unavailable due to planned outage 130 MW (150 MW).
B As of 0823 hours, March 31, 2025, Bay d'Espoir Unit 1 unavailable due to planned outage (76.5 MW).
C As of 0823 hours, March 31, 2025, Bay d'Espoir Unit 2 unavailable due to planned outage (76.5 MW).
D As of 0800 hours, May 04, 2025, Holyrood Unit 1 unavailable due to planned outage (170 MW).
E As of 0851 hours, May 05, 2025, Hardwoods Gas Turbine unavailable due to planned outage (50 MW).
F As of 0800 hours, June 08, 2025, Holyrood Unit 2 unavailable due to planned outage 115 MW (170 MW).
G As of 1400 hours, June 29, 2025, St. Anthony Diesel Plant available at 7.7 MW due to forced derating (9.7 MW).
H As of 0926 hours, July 21, 2025, Cat Arm Unit 2 unavailable due to planned outage (67 MW).
I As of 0549 hours, July 24, 2025, Cat Arm Unit 1 unavailable due to planned outage (67 MW).
J As of 0000 hours, July 26, 2025, Granite Canal Unit unavailable due to forced extension to planned outage (40 MW).

Section 2
Island Interconnected System - Supply, Demand & Outlook

Thu, Jul 31, 2025	Island System Outlook ²	Seven-Day Forecast	Island System Daily Peak Demand (MW)	
			Forecast ⁸	Adjusted ⁶
Island System Supply: ⁴	1,183 MW	Thursday, July 31, 2025	725	675
NLH Island Generation: ^{3,7}	825 MW	Friday, August 1, 2025	720	670
NLH Island Power Purchases: ⁵	80 MW	Saturday, August 2, 2025	710	660
NP and CBPP Owned Generation:	195 MW	Sunday, August 3, 2025	715	665
LIL/ML Net Imports to Island: ⁹	83 MW	Monday, August 4, 2025	765	715
7-Day Island Peak Demand Forecast:	765 MW	Tuesday, August 5, 2025	750	700
		Wednesday, August 6, 2025	750	700

Island Supply Notes For July 31, 2025

- K At 0000 hours, July 31, 2025, Hardwoods Gas Turbine unavailable due to forced extension to planned outage (50 MW).

- Notes:
1. Generation outages for running and corrective maintenance are included. These are not unusual for power system operations. They generally do not impact customer supply. Hydro schedules outages to system equipment whenever possible to coincide with periods when customer demands are low and sufficient supply reserves are available. However, from time to time equipment outages are necessary and reserves may be impacted.
 2. As of 0800 Hours.
 3. Gross continuous unit output.
 4. Gross output from all Island sources (including Note 3).
 5. NLH Island Power Purchases include: ML Imports, Exploits Generation, Rattle Brook, Star Lake, Wind Generation and capacity assistance (when applicable).
 6. Adjusted for interruptible load and the impact of voltage reduction when applicable.
 7. Due to limitations inherent in the design of combustion turbines, the output of combustion turbines may be reduced in the event that ambient temperatures exceed the threshold required for full rated output. This threshold is dependent on the design of each turbine.
 8. Does not include ML Exports.
 9. LIL Import sunk in the Island System. Actual LIL flows will be restricted by various system conditions including, but not limited to, Island Load, ML Exports and Avalon Unit status.

Section 3
Island Peak Demand and Exports Information
Previous Day Actual Peak and Current Day Forecast Peak

Wed, Jul 30, 2025	Island Peak Demand ¹⁰	12:15	754 MW
	Exports at Peak		245 MW
	LIL Net Imports to Island		1,957 MWh
Thu, Jul 31, 2025	Forecast Island Peak Demand		725 MW

- Notes:
10. Island Demand is supplied by NLH generation and purchases, LIL Imports plus generation owned and operated by Newfoundland Power and Corner Brook Pulp & Paper (Deer Lake Power, DLP).